



SMITSON

" INNOVATE TO SUCCEED "



SMITSON TECHNO PRIVATE LIMITED

- **Power Tools** (Full range of power tools includes abrasives)
- **Welding Consumables** (Electrodes, wires, Equipment, fluxes, gas cutters)
- **Other Required Industrial Products And Services**
- **Repair And Maintenance**

ABOUT

SMITSON TECHNO PRIVATE LIMITED

is a trusted name in the industry, known for its commitment to quality, innovation, and customer satisfaction. As a leader in the field, **Smitson Techno Private Limited** operates as a distributor, manufacturer, and service provider, delivering high-quality products and services to meet the diverse needs of its customers.

we have strong product range of power tools, includes cutting -edge abbrasieve as well as top -tier welding cosumables like electodes,wires, welding equipments, fluxes and many more industrial products.

Our focus is on providing reliable, durable, and high-performance industrial consumables, with an emphasis on timely delivery. We specialize in serving industries such as fabrication, forging, automotive, railways, aerospace, defense, heavy equipment, and engineering manufacturing. **Smitson Techno Private Limited** believes that customer satisfaction is just as important as product quality, which is why we offer both onsite and offsite solutions tailored to the specific needs of our clients.

Our commitment to excellence has allowed us to partner with some of the most prestigious companies in the industry. At **Smitson Techno Private Limited**, we are driven by the goal of becoming a market leader in the power tools and welding equipment space,many more industrial products, ensuring that every customer receives the best products and services on time, every time.

Aim:

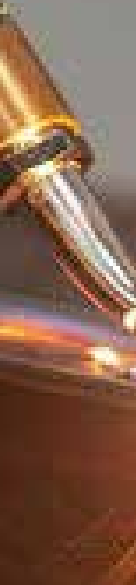
To be the preferred market leader in providing top-quality power tools, welding equipment, consumables and other industrial products services, ensuring 100% customer satisfaction.

Vision:

To pioneer innovative industrial solutions, becoming a trusted name across sectors by consistently delivering excellence in products, services, and timely material delivery.

Mission:

To provide superior, customized products and services that meet the unique needs of our customers, with a focus on quality, reliability, and customer satisfaction in every interaction.





Power Tools

Full range of power tools includes abrasives

Our range of power tools includes abrasive high-performance grinders and drill machines designed for precision and durability. These tools are ideal for various industrial applications, offering superior power and efficiency. With robust construction, they are built to withstand heavy-duty use in challenging environments. We offer tools in different specifications to cater to specific customer needs. Each tool is engineered to ensure maximum safety, ease of use, and long-term reliability.

Welding Consumables

Electrodes, wires, Equipment, fluxes, gas cutters

SMITSON TECHNO PRIVATE LIMITED provides top-grade welding consumables, including a wide variety of electrodes and wires. Our welding products are designed for optimal performance, ensuring strong, durable welds in various metals and alloys. They are suitable for applications in fabrication, construction, automotive, and heavy industries. With a focus on quality, our welding consumables minimize spatter and improve efficiency. We provide options tailored to the unique requirements of different welding techniques and materials.





Welding Equipment

We offer a comprehensive range of welding equipment, including cutting-edge machines for MIG, TIG, and arc welding processes. These machines are designed to deliver precision, power, and reliability in every weld. Built to meet the highest safety and performance standards, our equipment is suitable for both industrial and professional use. They are engineered to enhance productivity, reduce downtime, and ensure smooth operation. With advanced technology and user-friendly interfaces, Smitson Techno Private Limited welding equipment stands out in the market.

All Industrial products as per requirements

we also focus on providing high performance and quality other industrial products like Safety Products, Bearing, pipe (Hose, SS, MS,FRP) Nut Bolts, Hydraulic products, Pneumatics products, Sensors, scanners , Industrial-Optics and Lighting , Electronics display units, multi gauging, electronics gauging system, quality instruments , packaging material these are requirements. We offer these are ideal and various types of industrial products for different types of specification and application as per customers needs.





Consumable Services

In addition to products, Smitson Techno Private Limited provides on-site and off-site solutions, including maintenance, repair, and consulting services. Our expert team offers timely support to ensure the smooth functioning of tools and equipment. Whether it's optimizing performance or troubleshooting issues, we are committed to maintaining operational efficiency for our customers. We also assist in the selection of the right consumables and tools based on specific project needs. This ensures that customers receive customized, cost-effective solutions.





why choose us

High-Quality Products:

we offer durable, reliable, power tools, welding products, and other industrial products that meet industry standards.

Timely Delivery:

Our efficient logistics ensure on-time delivery, keeping your projects on schedule.

Comprehensive Solutions:

We provide products and customized onsite/offsite services tailored to your needs.

Industry Expertise:

With experience across multiple sectors, we understand and address unique industry challenges.

Customer Satisfaction:

We prioritize customer satisfaction, offering support and solutions that ensure long-term success.





GET IN TOUCH!

SMITSON TECHNO PRIVATE LIMITED



Office No.101, First Floor, Chandrashree Complex, Near Vishal Garden, Chakan Shikrapur Road, Chakan Pune – 410501 Maharashtra, India.



sales@smitsontechno.in
info@smitsontechno.in



+91 9823109008 / +91 9075752918